

Sustaining a Safe Return to Campus for Students, Teachers, and Instructors



Tap into the power of the AI-driven network to support health, safety and high-quality instruction.

Real Impacts on Education

Accelerated Learning Loss



30->50%

K12 students could lose 30% of reading progress and more than 50% of math because of emergency remote learning¹

Active Learning



Only 15%

of college students find online classes as effective as in-person instruction³

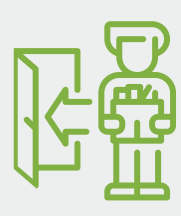
Student Well-Being



70%

of students receiving mental health treatment receive care in a school setting²

Teacher Brain Drain



10%

of teachers are more likely to leave the profession due to the pandemic⁴

Contact Tracing Supports the Way Forward to a Safe Campus

1



Identify

everyone on campus that was exposed to a person recently diagnosed with Covid-19

2



Notify

affected people about exposure and advise them of symptoms

3



Isolate

people who are exposed and insist they seek medical attention if they experience symptoms

3 Ways to Leverage the AI-Driven Enterprise to Reduce Health Risk

Mist solutions, including Mist Access Points and Mist Cloud Services support contact tracing and social distancing while protecting personal privacy



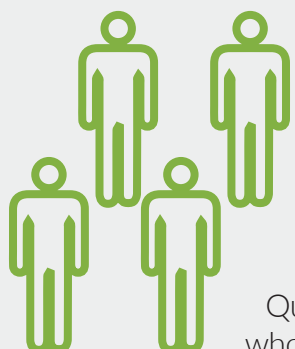
Hot Zone Alerting

Identify congested, noncompliant areas. Divert individuals away with real-time user alerts

Journey Mapping



For individuals who tested positive, determine how much time spent and where on campus they visited



Proximity Tracing

Quickly identify individuals who came in close proximity of people who have reported testing positive

3 Ways to Support Remote Instruction and a Remote Workforce

Enterprise-Grade Wi-Fi



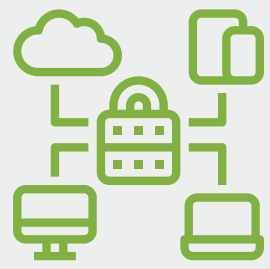
Empower teachers, instructors, and staff with enterprise-quality Wi-Fi to support remote instruction with Mist Access Points

A Familiar Experience



Enable remote workers to access all typical resources with IPsec VPN security with Mist Access Points and Mist Edge

Advanced Protection



Enhance remote workforce cybersecurity protection with Juniper Connected Security

Juniper Mist Uniquely Supports a Pathway to Safely Return to Campus



Learn how to leverage the AI-Driven Enterprise in support of contact tracing and social distancing at educational institutions.



1. "The Covid-19 slide: What summer learning loss can tell us about the potential impact of school closures on student academic achievement," NWEA Research, Dr. Megan Kuhfeld and Dr. Beth Tarasawa, April 2020 https://www.nwea.org/content/uploads/2020/05/Collaborative-Brief_Covid19-Slide-APR20.pdf
 2. "The Importance of Reopening America's Schools this Fall," CDC, July 28, 2020 <https://www.cdc.gov/coronavirus/2019-ncov/community/schools-childcare/reopening-schools.html>
 3. "Impact of Coronavirus on Students' Academic Progress and College Plans," Niche, March 25, 2020 <https://www.niche.com/about/enrollment-insights/impact-of-coronavirus-on-students-academic-progress-and-college-plans>
 4. "Teachers Say They're More Likely to Leave the Classroom Because of Coronavirus," Education Week, June 3, 2020 https://blogs.edweek.org/teachers/teaching_now/2020/06/teachers_say_theyre_more_likely_leave_classroom_because_coronavirus.html